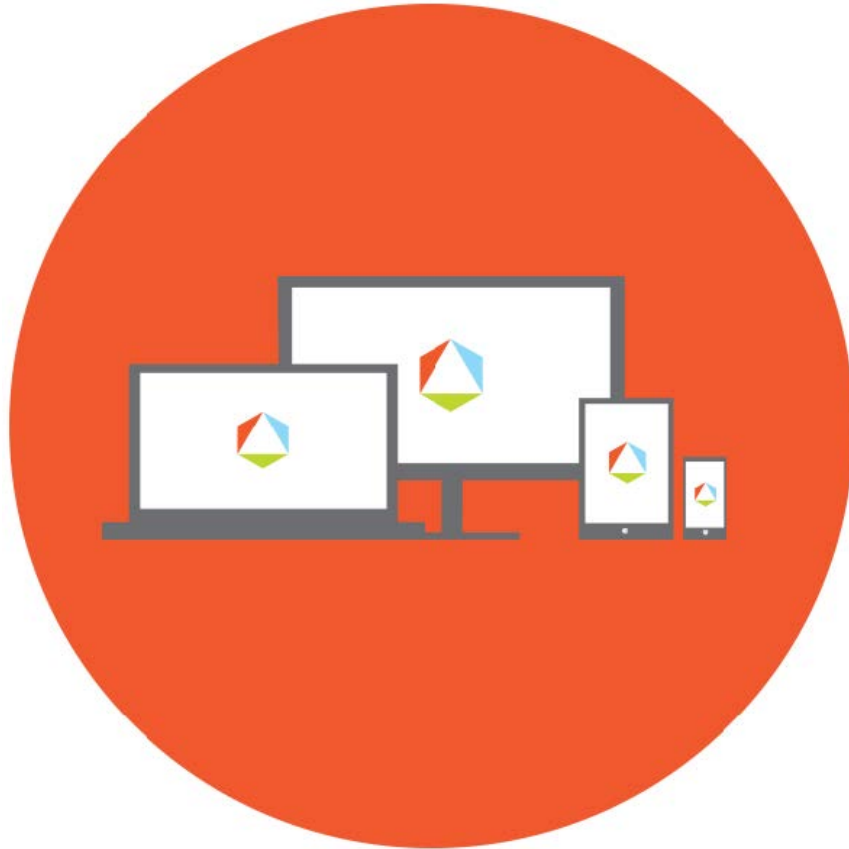




**FIRSTPATH**  
AUTISM



Data Sheet  
**Telling Time**  
[www.firstpathautism.com](http://www.firstpathautism.com)



# Telling Time

How to tell time using an analog clock, and eventual generalization to a digital clock.

**Receptive Discriminative Stimulus (SD):** Clinician (or parent, teacher) asks, "The small hand tell us the \_\_\_?"

**Correct Response:** Child responds with "Hour."

Target	Intro MT*	Mastery RR**	Target	Intro MT*	Mastery RR**
1. hour hand (short hand)					
2. minute hand (long hand)					
3. O' Clock (1-12)					
4. ":30" or "half past" (big hand at 6)					
5. ":15" or "quarter past" (big hand at 3)					
6. ":45" or "quarter til" (big hand at 9)					
7. 5 minute increments					
8. All single minute increments					
9. telling time on a digital clock					
10.					
11.					
12.					
13.					
14.					
15.					

\* **Intro MT:** The date the target was introduced to the child

\*\* **Mastery RR:** Is the date the child completed 3 consecutive random rotation trials at with 80-100% independence.

**Maintenance:** When all targets are mastered, reduce frequency of the presentation of the program to child systematically, ensuring that the child maintains skills by maintaining mastery scores of 80-100% before decreasing frequency further. (e.g. 5 times per week to 4 times per week for a month, to 3 times per week for a month to 2 times per week for a month, to once a week for a month, to generalized settings.)