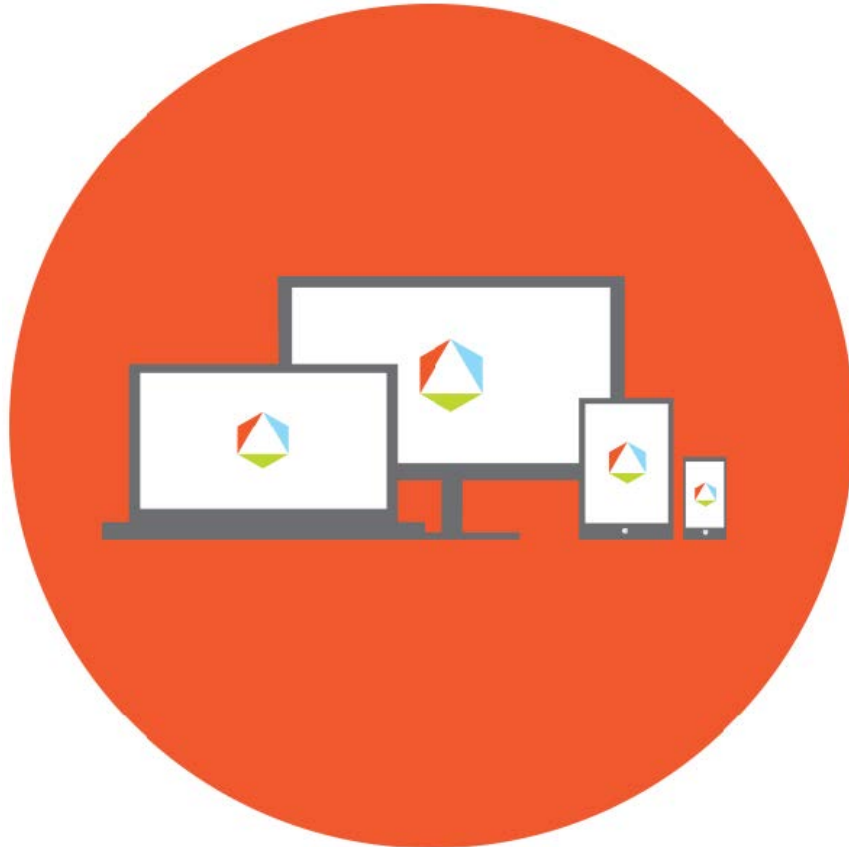




FIRSTPATH
AUTISM



Data Sheet
Patterns and Sequencing
www.firstpathautism.com



Patterns and Sequencing

Receptive Discriminative Stimulus (SD): Place items in pattern started on the table. Child has various colored blocks available.

Clinician says "What comes next?" (e.g. AB pattern using red and blue blocks)

Correct Response: Child will choose appropriate color (e.g. "Blue!" and place it after the last red block)

Target	Intro MT	Mastery RR	Target	Intro MT	Mastery RR
1. AB pattern "What comes next?"			21.		
2. ABC pattern			22.		
3. AABB pattern			23.		
4. ABBA pattern			24.		
5. Child <u>creates</u> an AB pattern			25.		
6. Child <u>creates</u> an ABC pattern			26.		
7. Child <u>creates</u> an AABB pattern			27.		
8. Child <u>creates</u> an ABBA pattern			28.		
9.			29.		
10.			30.		
11.			31.		
12.			32.		
13.			33.		
14.			34.		
15.			35.		
16.			36.		
17.			37.		
18.			38.		
19.			39.		
20.			40.		

* **Intro MT:** The date the target was introduced to the child

** **Mastery RR:** Is the date the child completed 3 consecutive random rotation trials at with 80-100% independence.

Maintenance: When all targets are mastered, reduce frequency of the presentation of the program to child systematically, ensuring that the child maintains skills by maintaining mastery scores of 80-100% before decreasing frequency further. (e.g. 5 times per week to 4 times per week for a month, to 3 times per week for a month to 2 times per week for a month, to once a week for a month, to generalized settings.)