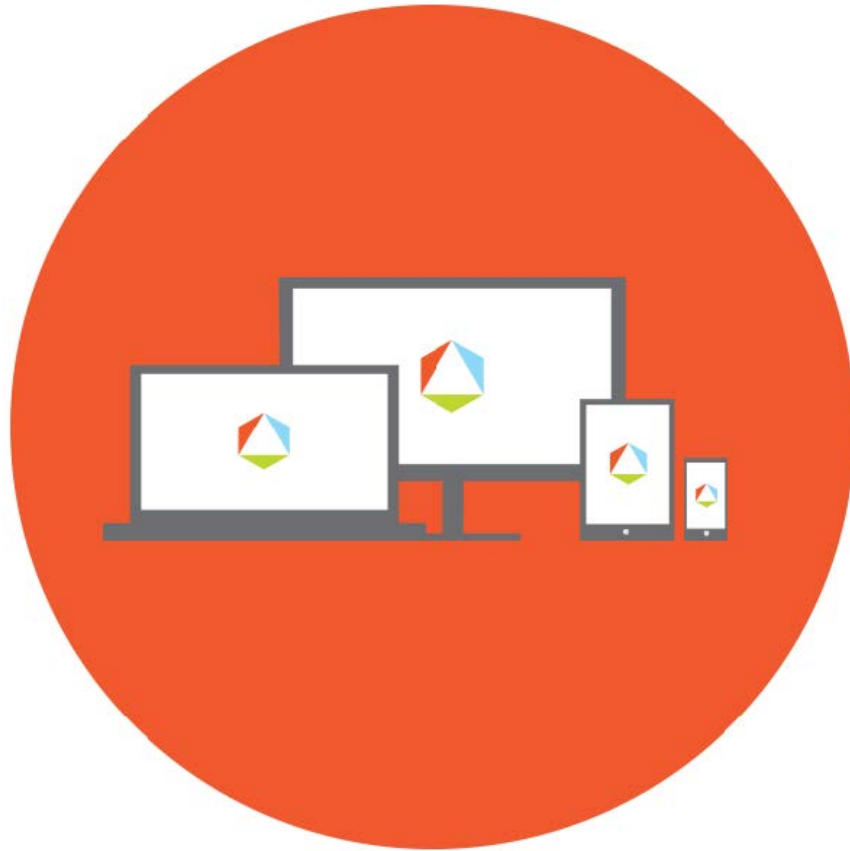




FIRSTPATH
AUTISM



Data Sheet

Community Safety: Safety Rules & Signs

www.firstpathautism.com



Community Safety: Safety Rules & Signs

Receptive Discriminative Stimulus (SD): "Touch ___." "Give me ___." "Point to___."

Correct Response: Child will hand appropriate picture/item over.

Expressive Discriminative Stimulus (SD): "What is this?"

Correct Response: Child labels picture/item appropriately.

Target	Intro MT*	Mastery RR**	Target	Intro MT*	Mastery RR**
1. Stop sign			21.		
2. Green traffic light			22.		
3. No walking traffic light			23.		
4. Walking traffic light			24.		
5. Bike lane sign			25.		
6. No trespassing sign			26.		
7. Quiet please sign			27.		
Add to the list based on what the child will regularly observe					
8.			28.		
9.			29.		
10.			30.		
11.			31.		
12.			32.		
13.			33.		
14.			34.		
15.			35.		
16.			36.		
17.			37.		
18.			38.		
19.			39.		
20.			40.		

* **Intro MT:** This is the date the target was introduced to the child

** **Mastery RR:** This is the date the child completed 3 consecutive random rotation trials at with 80-100% independence.

Maintenance: When all targets are mastered, reduce frequency of the presentation of the program to child systematically, ensuring that the child maintains skills by maintaining mastery scores of 80-100% before decreasing frequency further. (e.g. 5 times per week to 4 times per week for a month, to 3 times per week for a month to 2 times per week for a month, to once a week for a month, to generalized settings.)