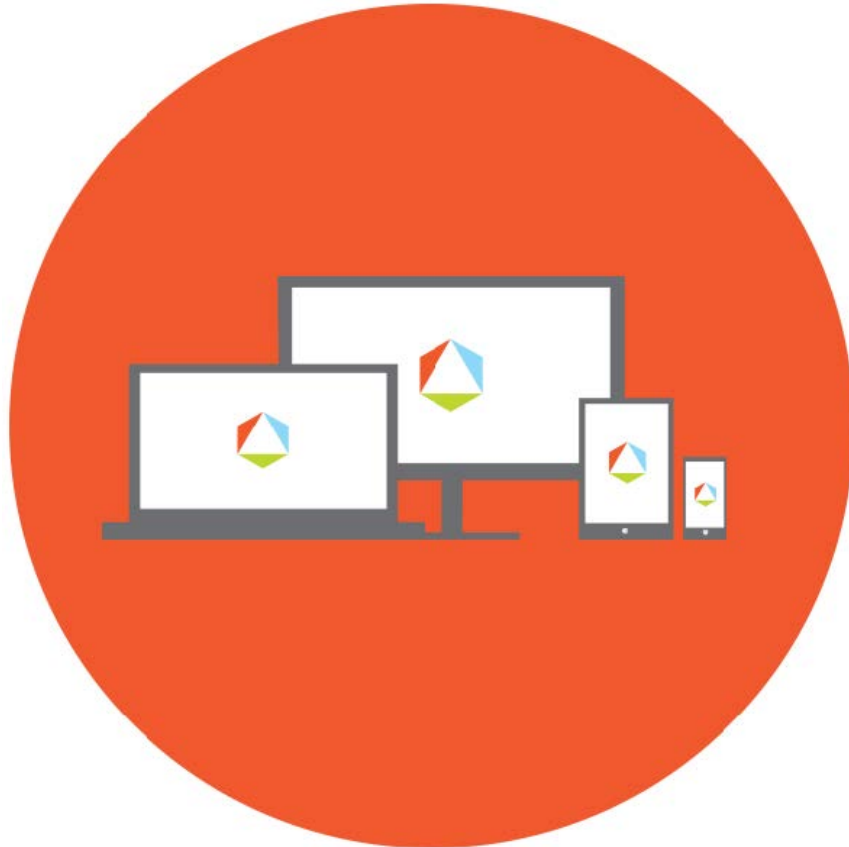




FIRSTPATH
AUTISM



Data Sheet
Simple Statements
www.firstpathautism.com



Simple Statements

Discriminative stimulus (SD): Teacher/ABA Professional/Clinician will make a statement using targeted carrier phrase, commenting on environment. (e.g., "I see a dog!")

Correct Response: Child will respond to the clinician's statement with appropriate response, using same carrier phrase. (e.g., "I see a tree.")

Target	Intro MT*	Mastery RR**	Target	Intro MT*	Mastery RR**
1. "I want"					
2. "I see ___."					
3. "I have ___."					
4. "I like ___."					
5. "I don't like___."					
6. "I hear ___"					
7. "I smell ___."					
8. "I feel ___."					
9. "It's a ____"					
10. "There's____"					
11. "Have a fruit"					
12. "Have a snack"					
13. " Have a ____"					
14. "Show me ____"					
15.					
16.					
17.					
18.					
19.					
20.					

*Intro MT: This is the date the target was introduced to the child

**Mastery RR: This is the date the child completed 3 consecutive random rotation trials at with 80-100% independence.

Maintenance: When all targets are mastered, reduce frequency of the presentation of the program to child systematically, ensuring that the child maintains skills by maintaining mastery scores of 80-100% before decreasing frequency further. (e.g. 5 times per week to 4 times per week for a month, to 3 times per week for a month to 2 times per week for a month, to once a week for a month, to generalized settings.)